

# CERTIFICATE OF LOCATION OF GOVERNMENT CORNER

NORTH QUARTER Corner of Section 8, Township 107, Range 42, 5TH P.M.

STATE OF MINNESOTA, County of MURRAY

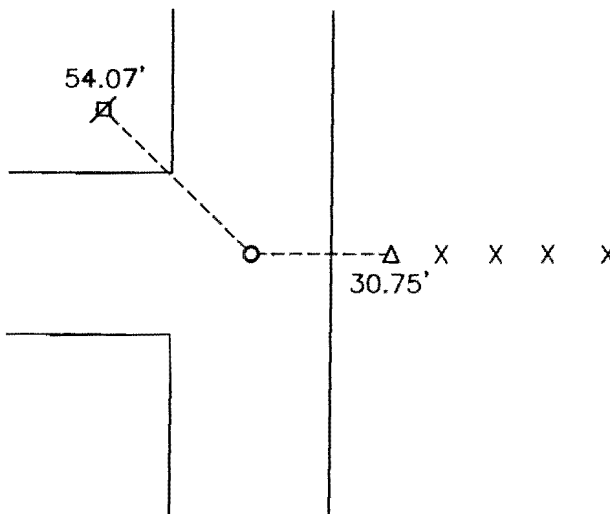
At the corner location shown on the sketch:

On \_\_\_\_\_ found a \_\_\_\_\_  
DATE

left monument as found,  lowered monument,  removed monument (explain)

On 04-17-2008 placed a 5/8" IRON WITH SEAL #43844  
DATE

### SKETCH OF REFERENCE TIES



Minnesota State Plane Coordinate  
System Murray County Datum  
NAD83 (1996)

N: 190034.217  
E: 461347.714

Nail and seal in power pole NW 54.07'  
Top center telephone pedestal East 30.75'

Statement of evidence relative to this corner location is on back of page.

I hereby certify that this document and the data contained herein was prepared by me or under my direct supervision.

[Signature] 10/15/08  
SIGNATURE DATE

Registration No. 43844

Land Surveyor,  Professional Engineer  
 County Surveyor,  County Engineer

OFFICE OF THE COUNTY RECORDER

County of \_\_\_\_\_

I hereby certify that this document was filed in the Co. Recorders office at \_\_\_\_\_ .M on the \_\_\_\_\_ day of \_\_\_\_\_ A.D. 20 \_\_\_\_\_

County Recorder [Signature]

By OCT 22 2008, Deputy

DOCUMENT NO. \_\_\_\_\_

## Statement of Evidence

In 1861, L. G. M. Fletcher, did the original subdivision of the township.

In 1945, the corner was recorded as a concrete stone.

On April 17, 2008, Bueltel-Moseng Land Surveying dug by hand and found nothing. We set the corner on the projected line from the South Quarter corner of 8-107-42 through the center of Section 8-107-42 and in line with the fence to the east.